

# Avery Dennison Instructional Bulletin 4.09

## Importing Profiles with Onyx Postershop 5.0

### Introduction

RIP stands for **Raster Image Processor** It is the actual software program that translates and sends the data from the computer to the printer. When this data is sent to the printer, the RIP can link specific profiles to it. These profiles can be general printing profiles with the function of a change in Ink-limitation, Colour-arrangements, or raster settings.

This instructional bulletin shows the general working-procedure of how to import a general printing profile or an ICC profile correctly and effectively. The example that is shown below is the specific procedure for the Onyx Postershop RIP software and it is the basic procedure.

Other RIP platforms will have different procedures and these can be found in the manual, which is included in the software package of that specific RIP platform.

The procedure is shown as steps. Also some screen prints are added to this bulletin to clarify the route.

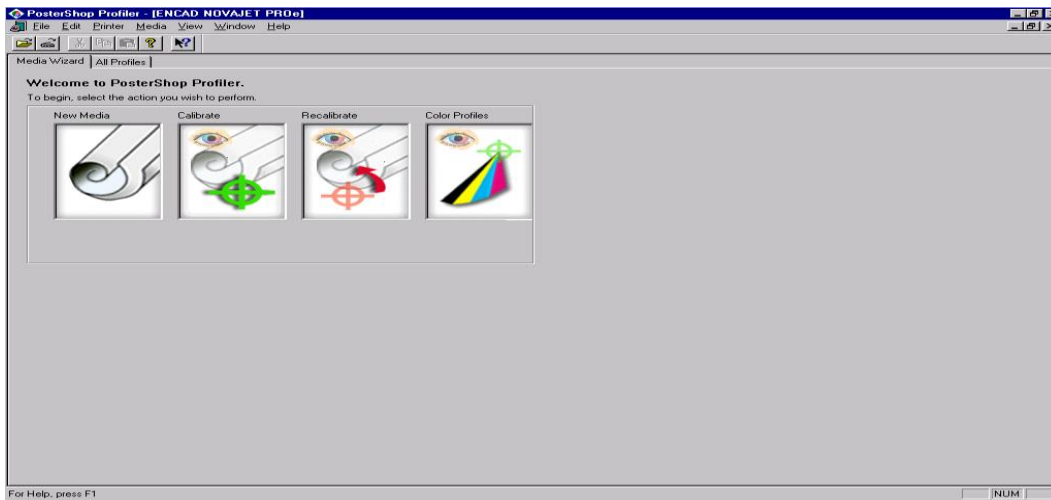
*Note: Profiles can be imported from any drive, being the CD drive, a ZIP drive or the C drive itself, when copied over from a disk to the hard-drive.*

*For this example procedure a CD disk and the CD disk drive is used.*

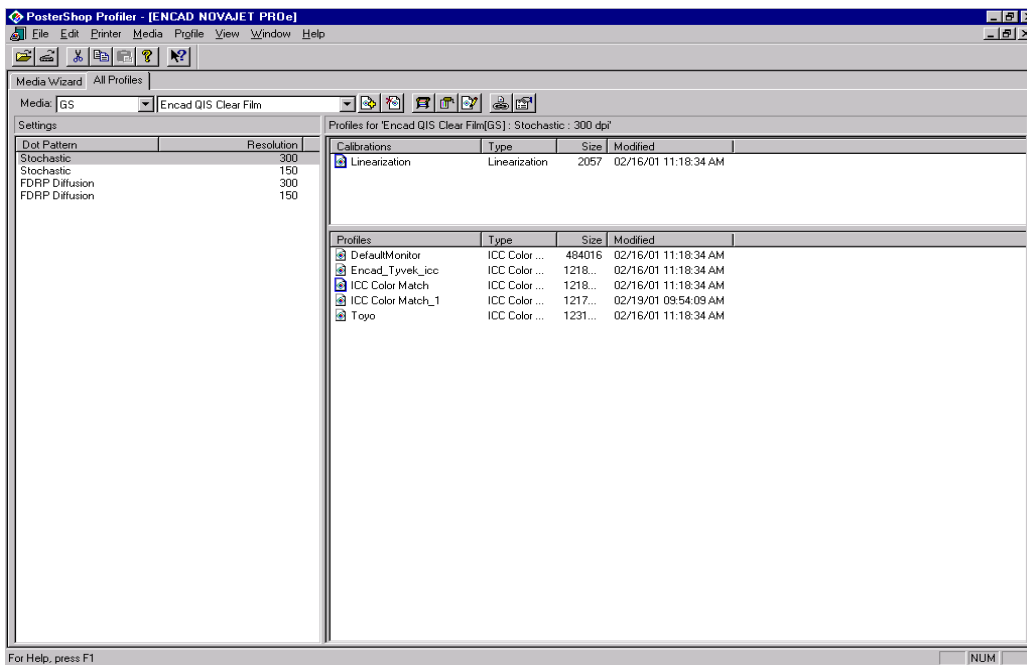
### Import procedure

1. Put the disc into the CD drive of the computer or RIP
2. Start the Onyx Postershop 5.0
3. Go to 'Tools' in the menu bar.
  - Now select 'Run Profiler...'
  - A dialogue screen 'Postershop Profiler' appears with empty fields.
4. Go to 'File' in the menu bar.
  - select the printer to be used, for example the 'Encad Novajet PROe'.
  - you will get a screen for the settings of selected printers. In this case, it is the printer 'Encad Novajet PROe' (mentioned in the top-bar)
  - Two subtitles are shown here 'Media Wizard' and 'All Profiles' (See **picture 1**).

## Picture 1

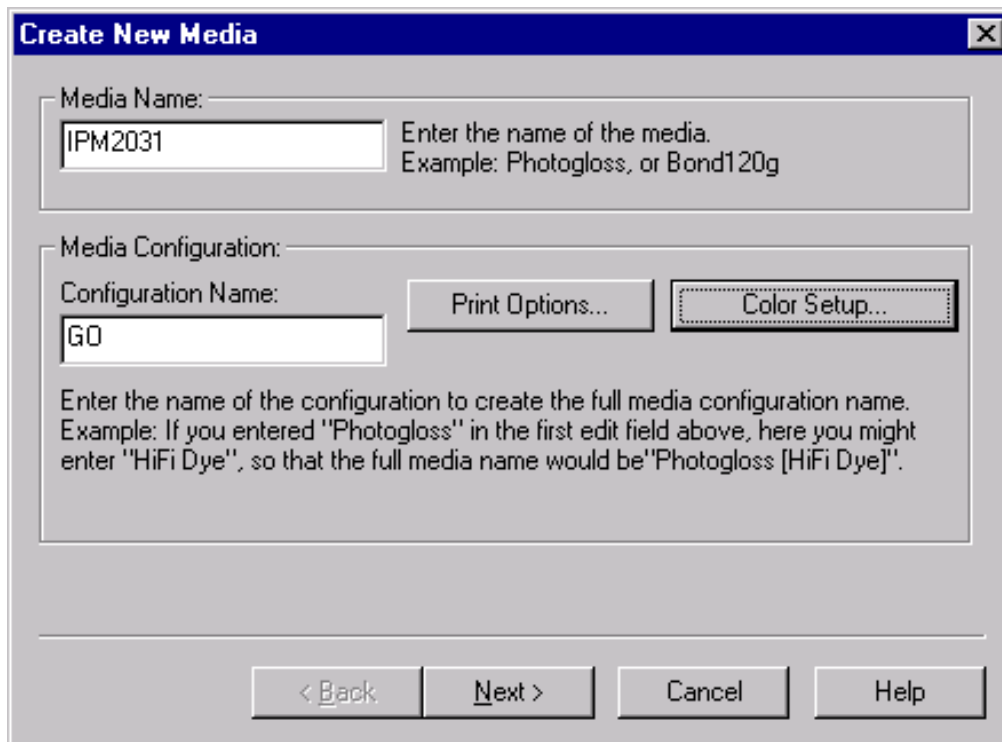


## Picture 2



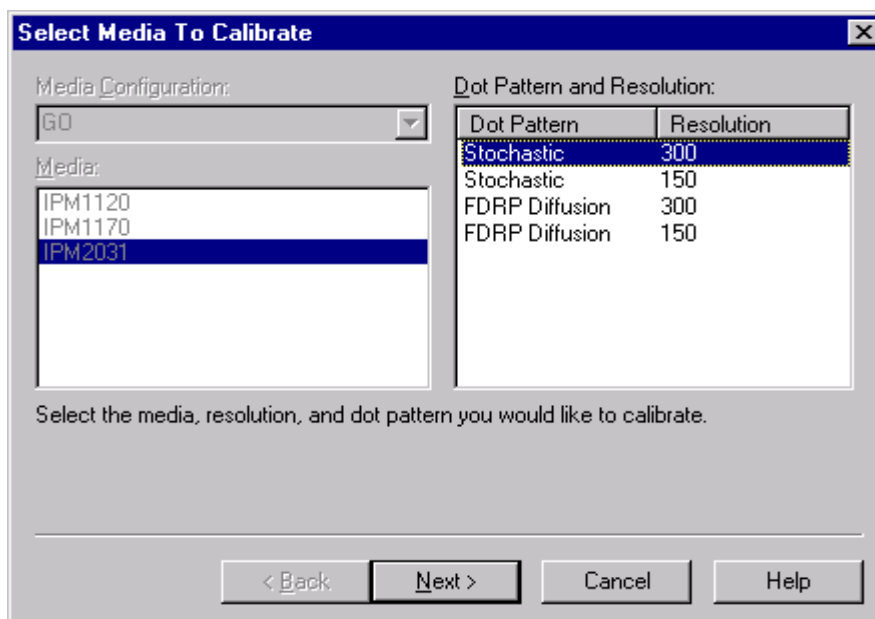
- Click on the Media menu, select 'Create...' and you will get a next screen to fill in the 'new' Media Name and Configuration Name (for example a type of ink like **GO** in the example, or just leave this field blank) (see picture 3).

**Picture 3**



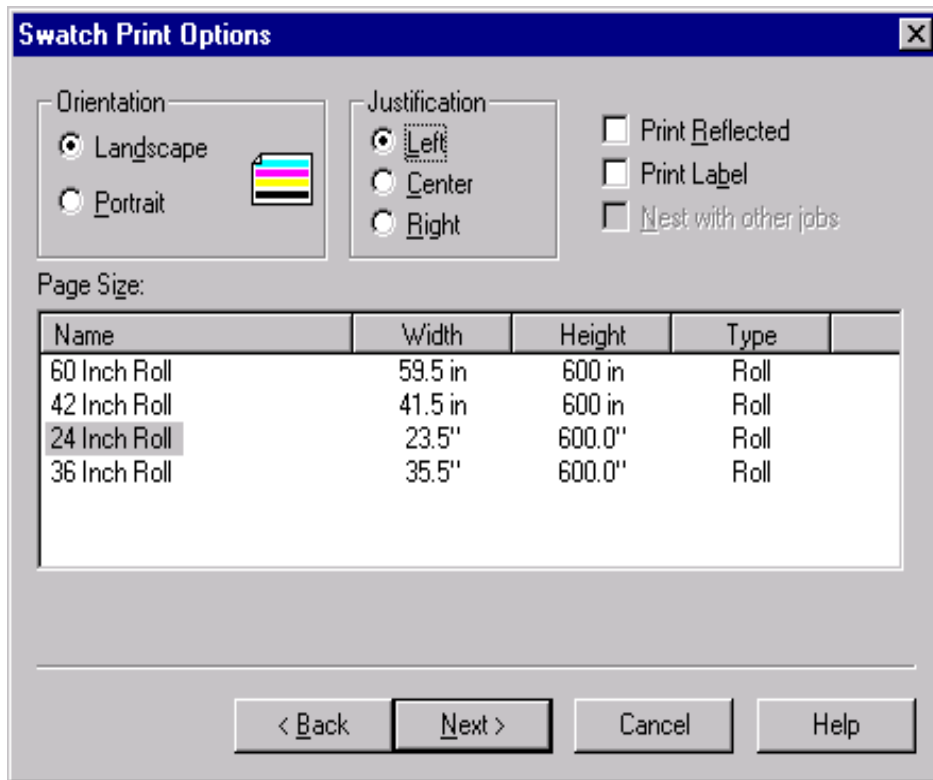
- Now click on 'Next', and select the right 'Dot Pattern' and Resolution in the window called (Select Media to Calibrate). You will get this screen automatically (see picture 4). Here you will see the name of the media you just typed in, in the screen represented by picture 3.

**Picture 4**



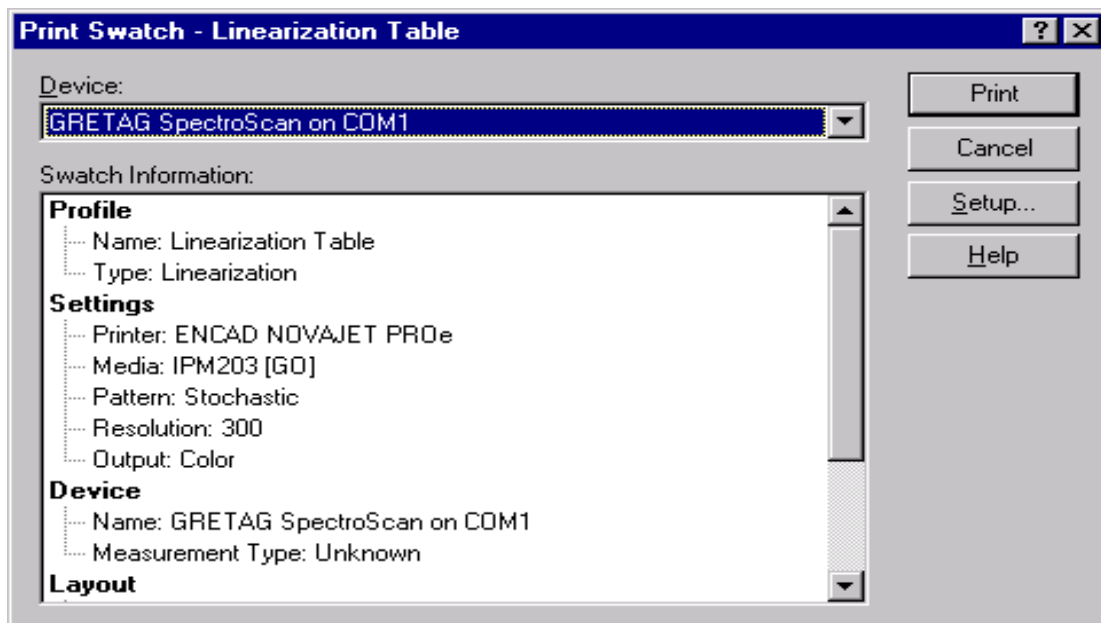
- Continue to click on 'Next', make the right selection for the page size concerned. For example 24 inch (see picture 5).

Picture 5



9. Click on 'Next' again, and the dialogue screen 'Print Swatch – Linearisation Table' pops up. Here we only show how to import the profile, so click cancel (see picture 6).

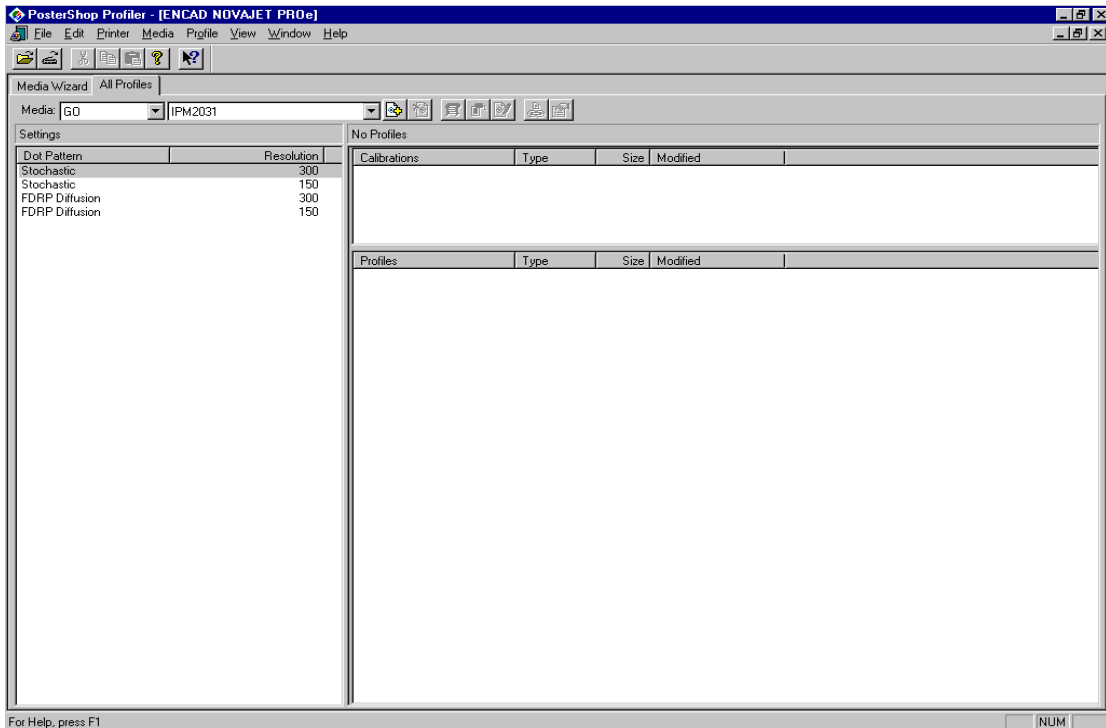
Picture 6



10. Now go back to the Profiler dialogue and select the 'Media Name' and 'Configuration Name'.

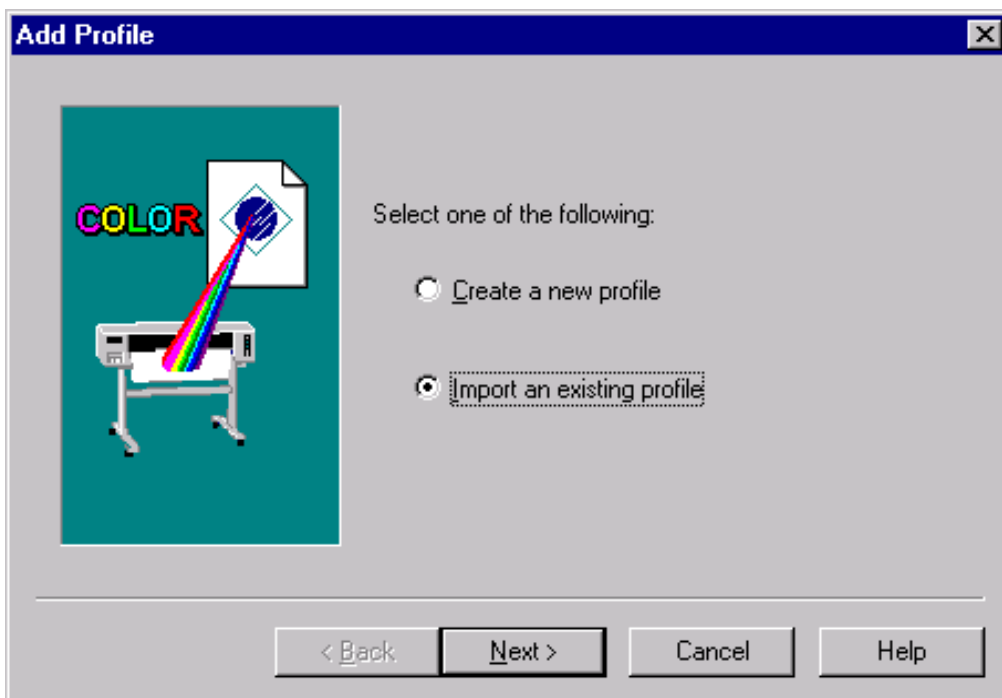
Move the mouse to the top bar called 'Profile' (see picture 7), and a screen 'add profile' appears, click on that button.

Picture 7



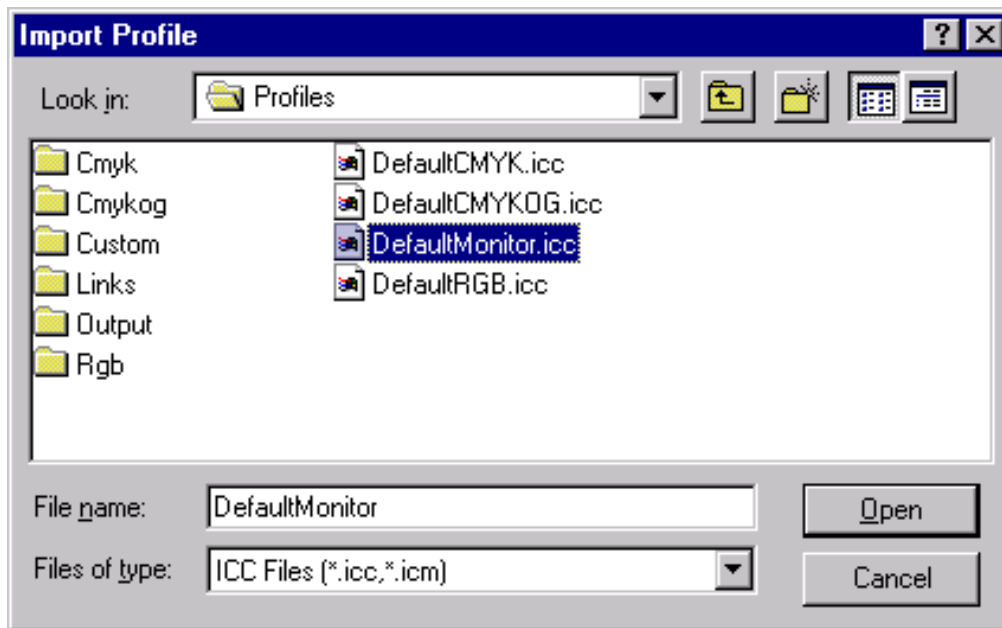
11. You get the 'Add Profile' dialogue. Select 'Import an existing profile' (see picture 8).

Picture 8



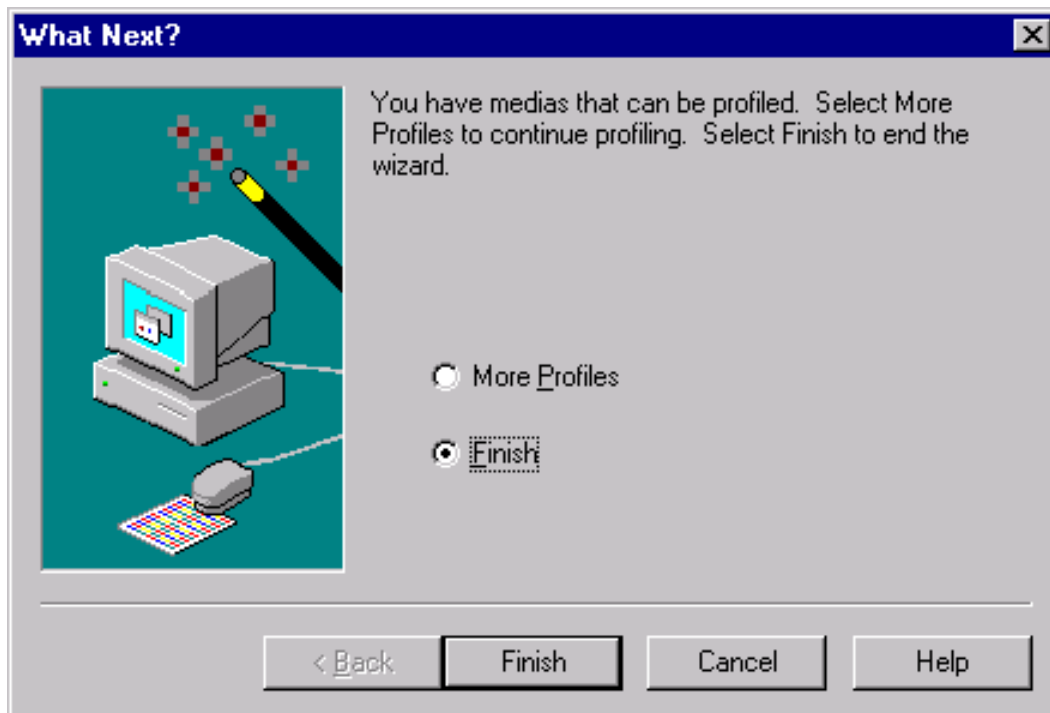
- Click on 'Next', and 'Browse...' to open the dialogue (see picture 9). Select the right drive and file you want to import. Then click 'Open'.

Picture 9



- The selected now is imported. Click 'Finish' (see picture 10).

Picture 10



For further information, contact your local Avery Graphics representative.