

Avery Dennison Technical Bulletin 4.08

Importing Profiles with Onyx Postershop 4.5

Introduction

RIP stands for **Raster Image Processor**. It is the actual software program, which translates and sends the data from the computer to the printer. When this data is sent to the printer, the RIP can link specific profiles to it. These profiles can be general printing profiles with the function of a change in ink-limitation, colour-arrangements, or raster settings.

This technical bulletin shows the general working-procedure to import a general printing profile or an ICC profile correctly and effectively. The example that is shown below is the specific procedure for the Onyx Postershop RIP software and it is a standard procedure.

Other RIP platforms will have different procedures and these can be found in the manual, which is included in the software package of that specific RIP platform.

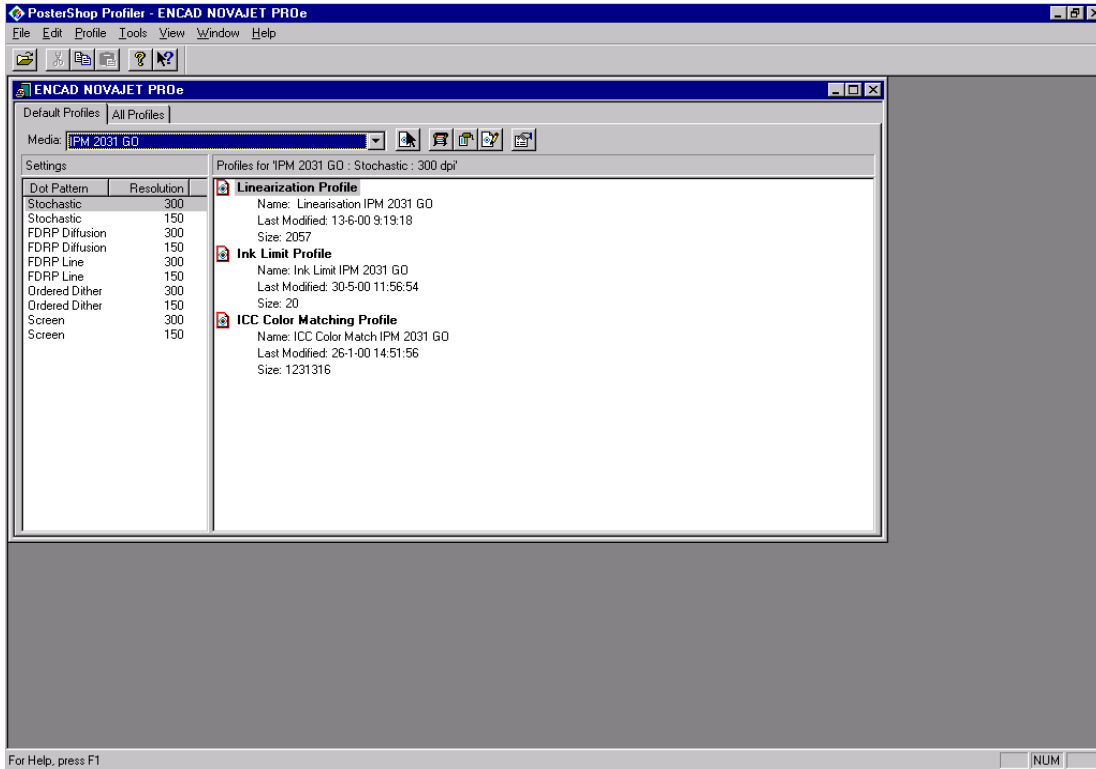
The procedure is shown as steps. Also some screen prints are added to this bulletin to clarify the route.

Note: Profiles can be imported from any drive, being the CD drive, a ZIP drive or the C drive itself, when copied over from a disk to the hard-drive. For this example procedure a CD disk and the CD disk drive is used.

Start

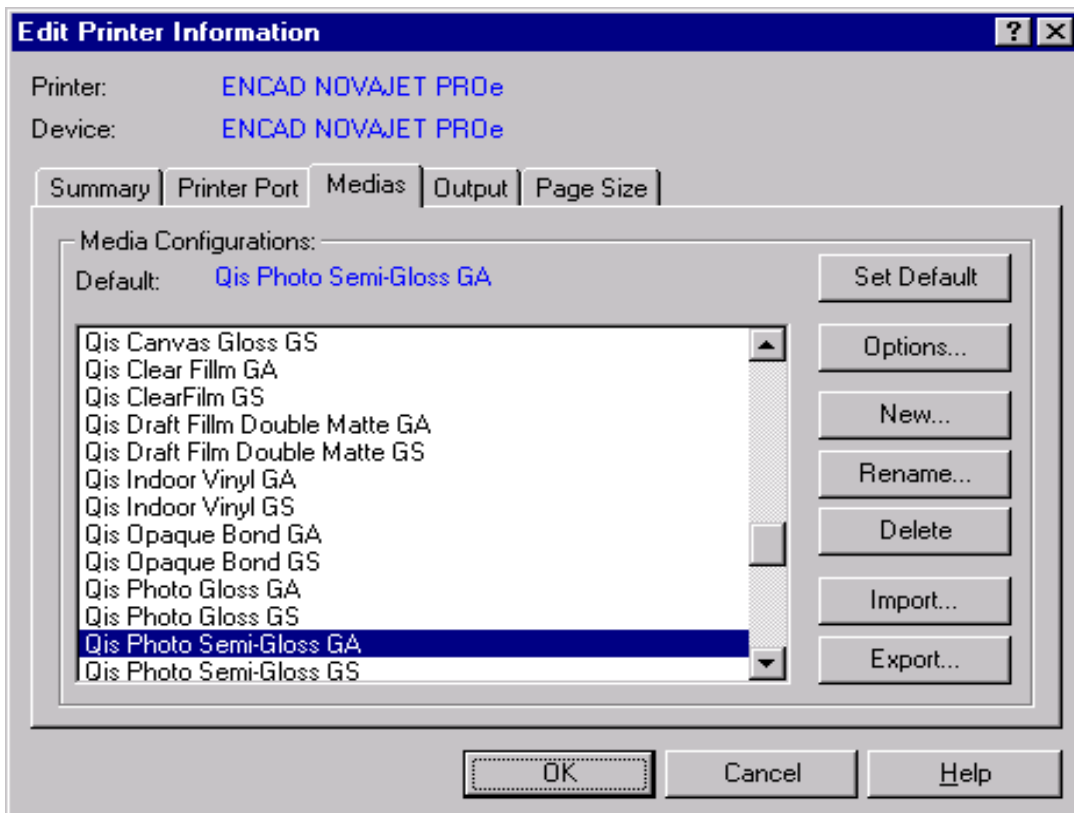
1. Put the disc into the CD drive of the computer or RIP
2. Start the Onyx Postershop program 4.5 version
 - Go to 'Tools' in the menu bar
 - Now select 'Run Profiler...'
 - You will get a screen called Postershop Profiler (see picture 1).
3. Go to 'File' in the menu bar.
 - Select the printer to be used, for example the 'Encad Novajet PROe'.
 - You will get a screen for the settings of selected printers. In this case, it is the printer 'Encad Novajet PROe' (see picture 1).

Picture 1



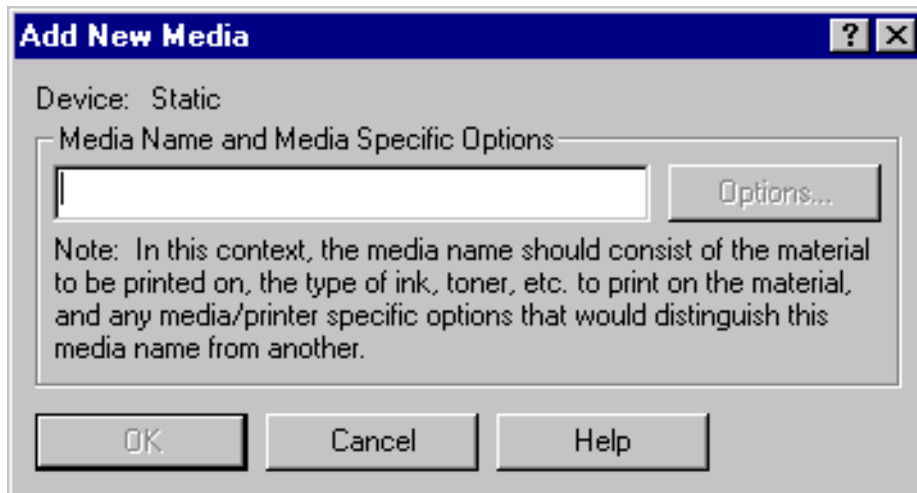
4. Go to 'Tools' in the menu bar of Postershop Profiler
 - Select 'Edit printer information' and click.
 - You will get a menu called the 'Edit Printer information' with 5 selectable tabs (see picture 2).

Picture 2



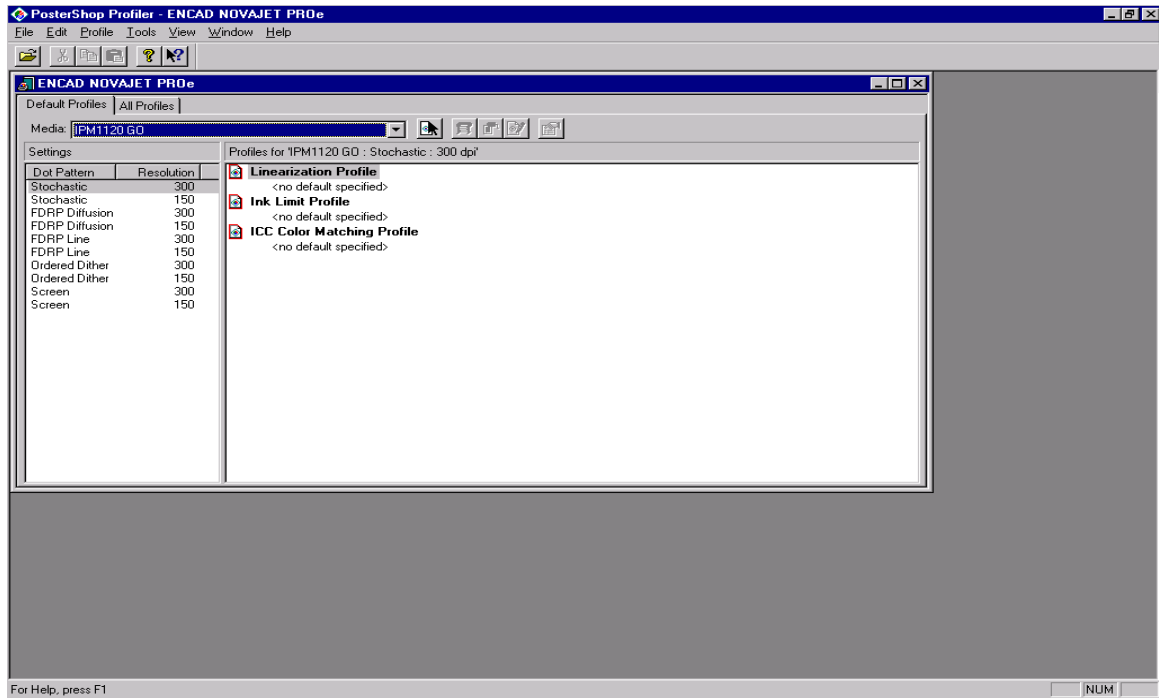
- Select the 'New' button, and click
- You will get a screen called 'Add New Media', in the text bar you can now type any proper name you want. Do not use symbols here like / (see picture 3).

Picture 3



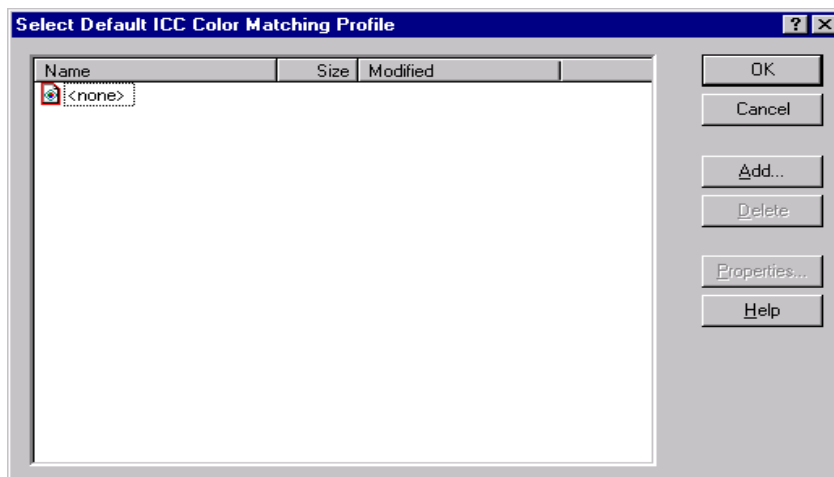
- You can also see 'Options...' in this screen. It is not necessary to use it unless you want to change certain settings. An example might be to change the printing passes setting.
 - After you have entered a specific name for the media here, Click on 'OK'.
 - Then back into the screen called 'Edit printer info...', and click OK.
6. Now you are back in the screen 'Encad Novajet PROe'.
- In the tab 'Default Profiles', click on the arrow of 'media' to get the pull-down menu. In this pull-down-menu you now select the defined media you just entered.
7. Linearisation Profile
- Ink Limit Profile
 - ICC Colour Matching Profile
 - For all the items it is mentioned, 'No default specified' (see picture 4).

Picture 4



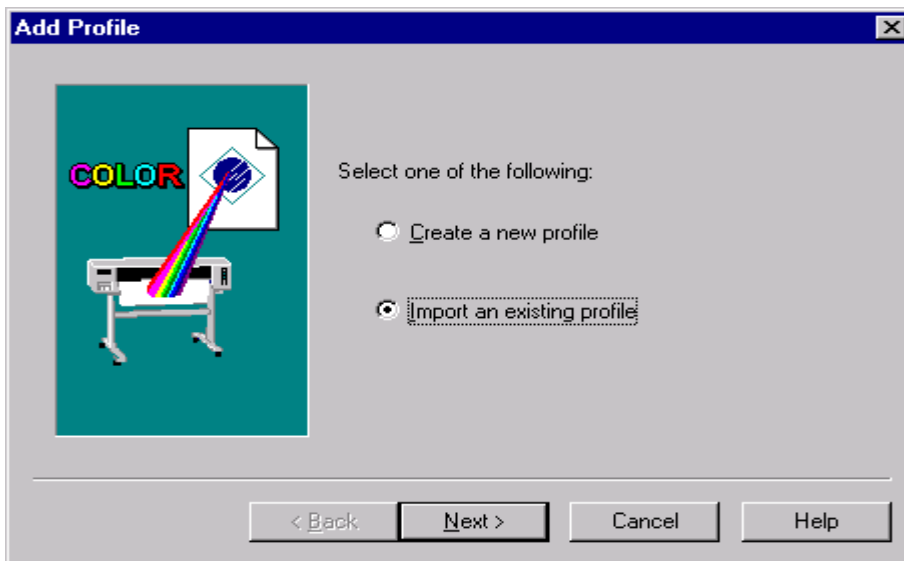
8. To specify the profile, you can import the profile from CD or other drives, or from the C drive if you have already copied the file to this drive.
Note: This counts only for ICC colour matching profile. Select this item.
9. Go to the menu bar of 'Postershop Profiler' and here choose 'select...'
10. You will get a screen 'Select Default ICC Colour Matching Profile' (see picture 5).

Picture 5



- Select the 'Add...' button here and you will get this screen (see picture 6).
- You have two choices in the 'Add Profile' screen.
- Choose 'Import an existing profile'.

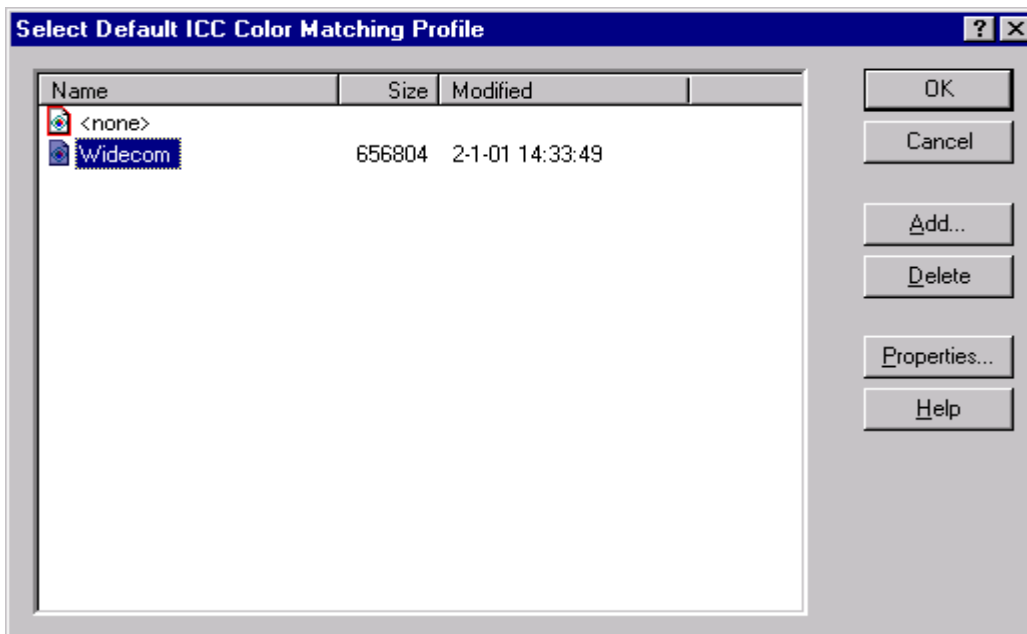
Picture 6



- Click on the 'Next' button.
- Now import the profile from CD. Choose it and click on 'Finish'.

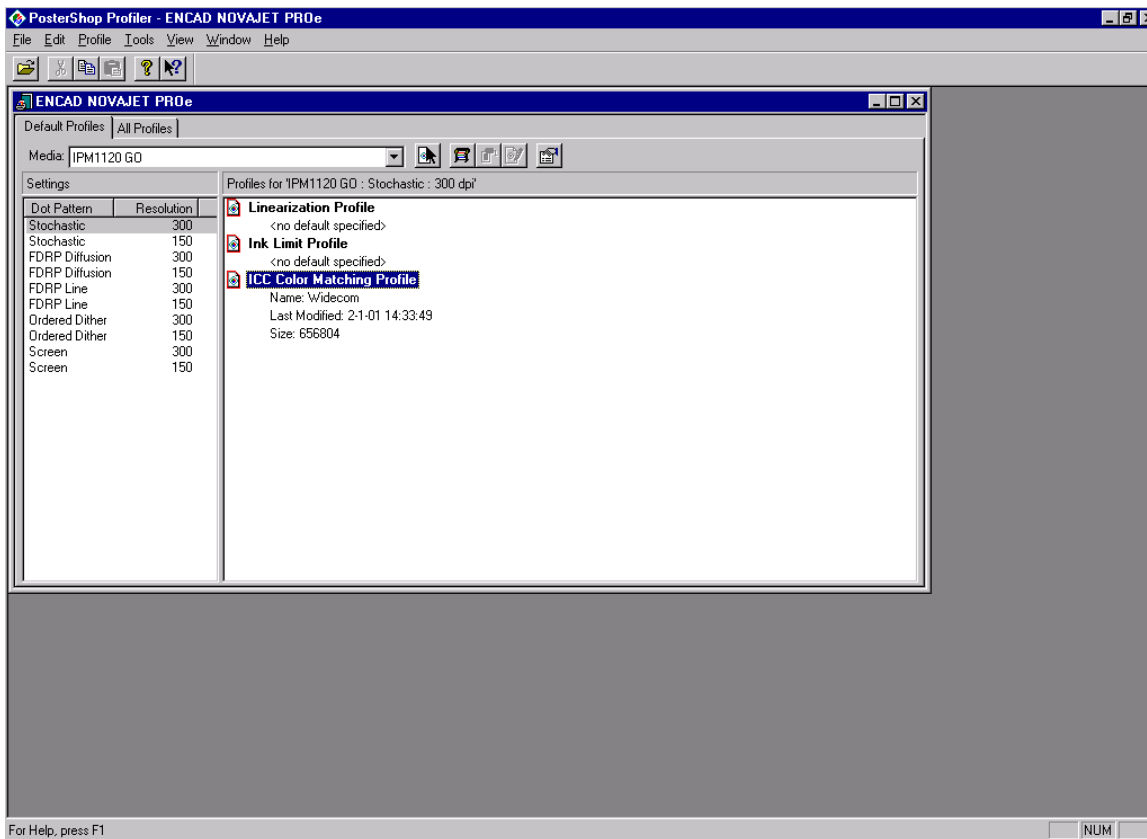
11. Check if the ICC profile has been selected in the 'Selected Default ICC Colour Matching Profile', and click on 'OK' (see picture 7).

Picture 7



12. You will now get the former 'Encad Novajet PROe' screen again, you can see the profile listed under 'ICC Colour Matching Profile' (see picture 8).

Picture 8



13. Start Postershop, open the picture you want to print.
14. In the pull down menu, choose the specific printer and media for which the profile is imported/specified. (Also follow instructions according to the original RIP software supplier.)

For further information, contact your local Avery Graphics representative.